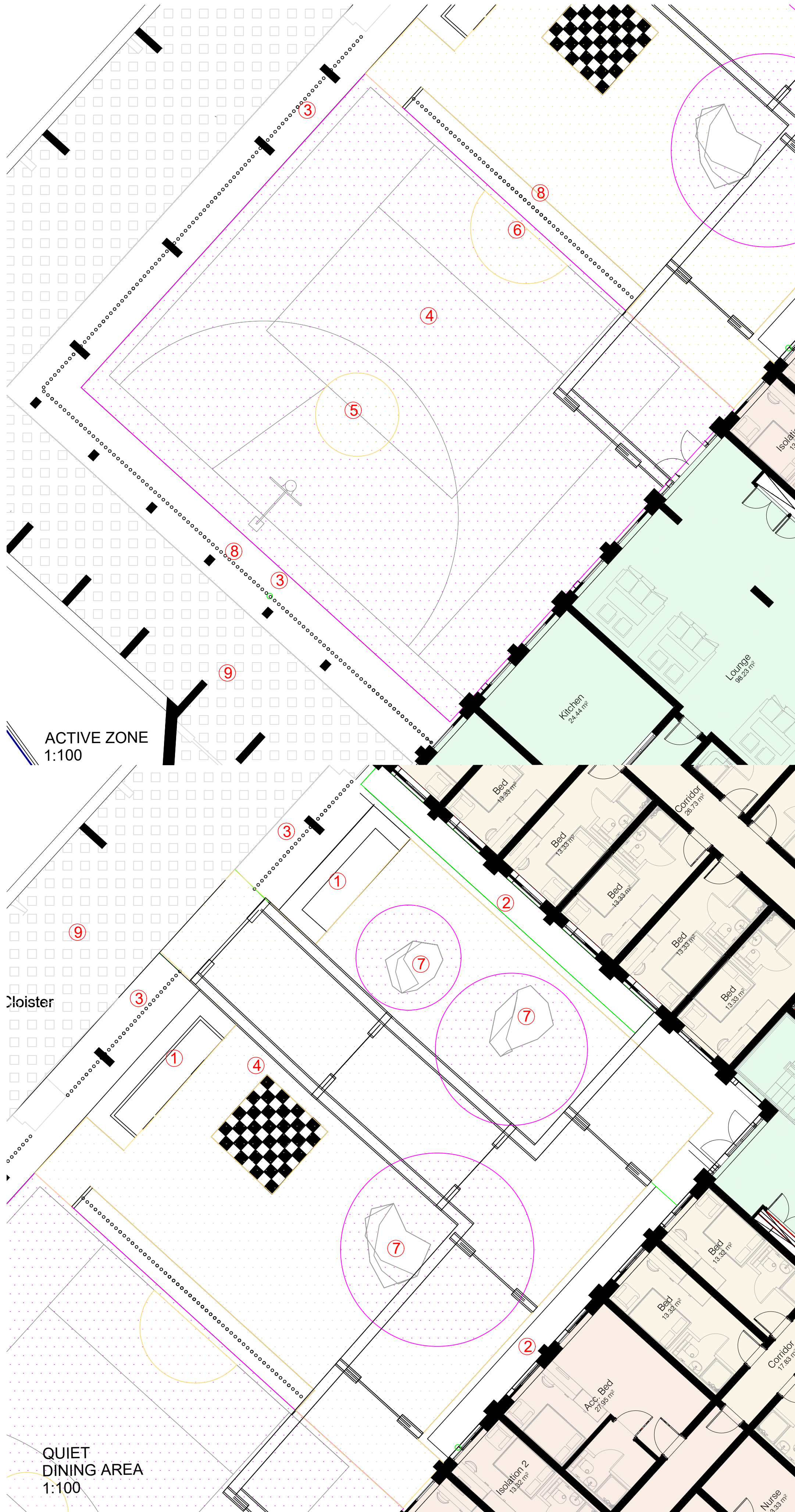
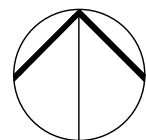


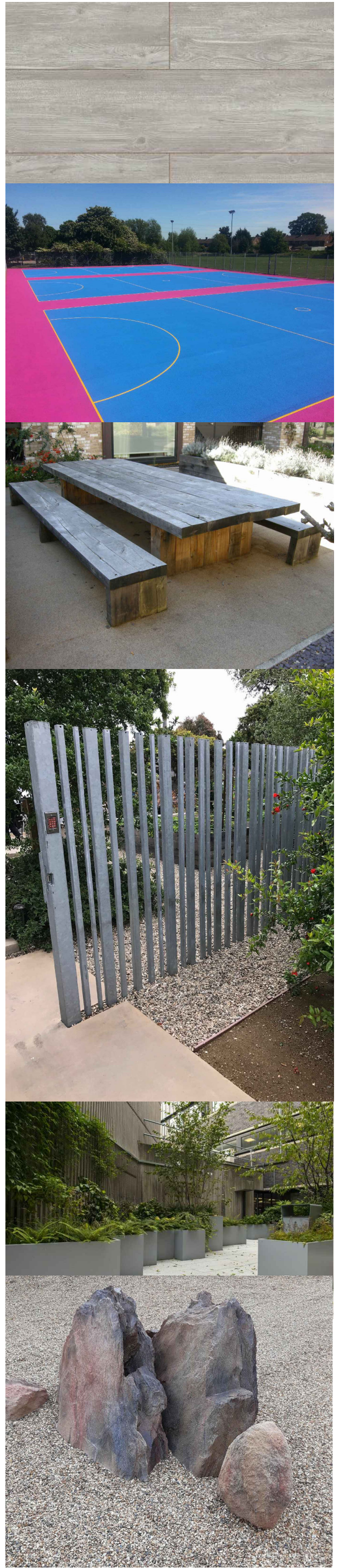
- ① Large section timber tables and benches
- ② Trough formed from Steel retaining edge Planter line Bespoke / Kinley 1000x600mm high hot dip Galv.
- ③ Trough formed from Steel retaining edge Planter line Bespoke / Kinley 2000x600mm high hot dip Galv.
- ④ 3G Rubberized polychromatic surface
- ⑤ Basket Ball end and hoop
- ⑥ Football end with low backboard
- ⑦ Lightweight fiberglass stones 3 different sizes 300x1700 450x1900 and 1200x2000 all with flat bases by Artificial Stones of other approved
- ⑧ Hot dipped galv tubular screen 100mm centrens
- ⑨ Symphony Porcelain plank in Hampton style by Marshall's or other approved on self leveling pedestal system

PROPOSED EXTERNAL HARD WORKS
FIRST FLOOR
scale 1:200



ACTIVE ZONE
1:100

QUIET
DINING AREA
1:100



P34	08.12.2022	FORTH ISSUE	ADDITION OF COVERED ESCAPE	DAH
P33	05.09.2022	THIRD ISSUE		DAH
REVISION	DATE	COMMENTS		AUTHOR / CHECKED

EXPEDITE

CARDIFF OFFICE
35 Village Way, Greenmeadows Springs
Business Park, Cardiff, CF15 7NE
t: 02920 098655

EXETER OFFICE
35 Southminster East
Exeter, EX1 1AP
t: 01392 691631

RIBA

we expedite steps.com

TITLE

PROJECT BLUE DRAGON - SITE 2
ON BEHALF OF CARDIFF 6th FORM COLLEGE

DETAIL

HARDWORKS_FF

DATE	SCALE
NOVEMBER 2022	1:200 @A1
DRAWING No.	REV
21.65-EDS-XX-XX-DR-(00)-400-04	HWFF
DRAWING - STATUS	AUTHOR / CHECKED
PLANNING	DAH