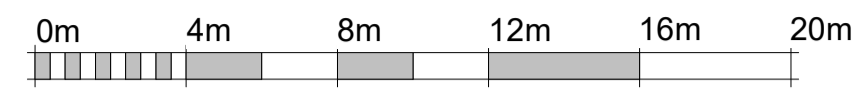
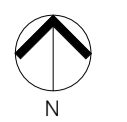


Figured dimensions only are to be taken from this drawing. All dimensions are to be checked on site before any works put in hand.



VISUAL SCALE 1:200 @ A1

**Key**

- Deliveries
- Waste removal

Waste is collected twice a week via a private collection company

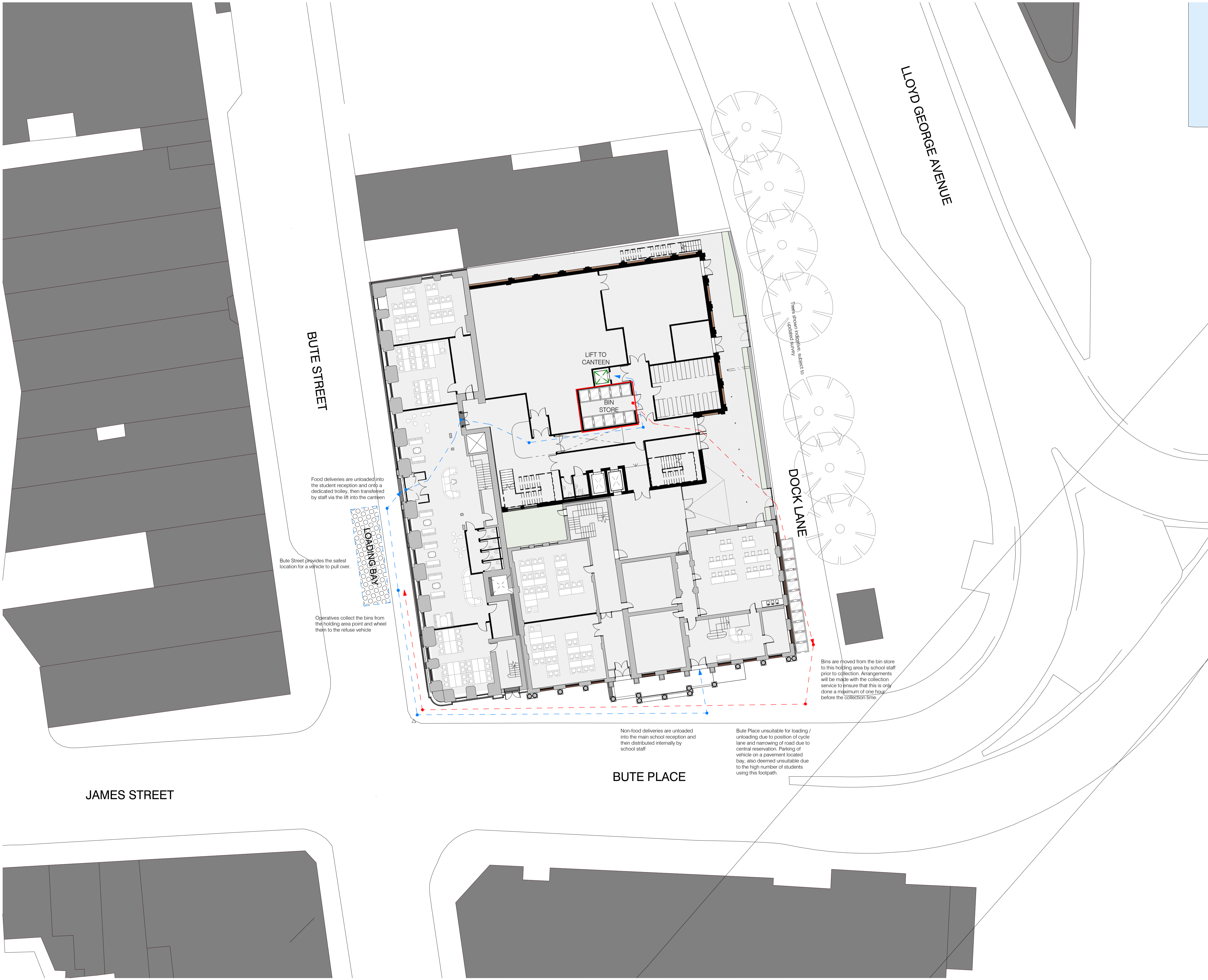
The following size bins will be provided with individual bins designated for food waste, mixed recycling and non-recyclables

The existing college site has waste collected twice a week, the figures below are based on a typical month

**Existing**  
 Mixed recycling = 46 x 1100 = 50600 litres  
 Food waste = 42 x 240 = 10080 litres  
 Non-recyclable = 5 x 360 = 1800 litres

**Proposed**  
 Mixed recycling = 56 x 1100 = 61600 litres  
 Food waste = 16 x 1100 = 17600 litres  
 Non-recyclable = 8 x 1100 = 8800 litres

We have increased provision in order to allow for future growth. Bins will only be emptied when full which means that the non-recyclables will only need to be emptied twice monthly, reducing the total number of bin movements required.



BUTE STREET

LLOYD GEORGE AVENUE

DOCK LANE

BUTE PLACE

JAMES STREET

LIFT TO CANTEEN

BIN STORE

LOADING BAY

Food deliveries are unloaded into the student reception and onto a dedicated trolley, then transferred by staff via the lift into the canteen

Bute Street provides the safest location for a vehicle to pull over.

Operatives collect the bins from the holding area point and wheel them to the refuse vehicle

Non-food deliveries are unloaded into the main school reception and then distributed internally by school staff

Bute Place unsuitable for loading / unloading due to position of cycle lane and narrowing of road due to central reservation. Parking of vehicle on a pavement located bay, also deemed unsuitable due to the high number of students using this footpath.

Bins are moved from the bin store to this holding area by school staff prior to collection. Arrangements will be made with the collection service to ensure that this is only done a maximum of one hour before the collection time.

02	Issued for Pre-Application Consultation	29.07.22	ML
01	Issued for comment	12.07.22	ML
Revision	Description	Date	Issued



Client's Name  
**Cardiff 6th Form College**

Job Title  
**Cardiff 6th Form Academic Hub**

Status  
**Preliminary** Suitability  
S0

Scale  
**1 : 200 @ A1**

Document Reference  
**21.22-EDS-XX-00-DR-A-(00)301**

Drawing Title  
**Servicing Strategy**

Drawing Number <b>(00)301</b>	Revision <b>02</b>
----------------------------------	-----------------------